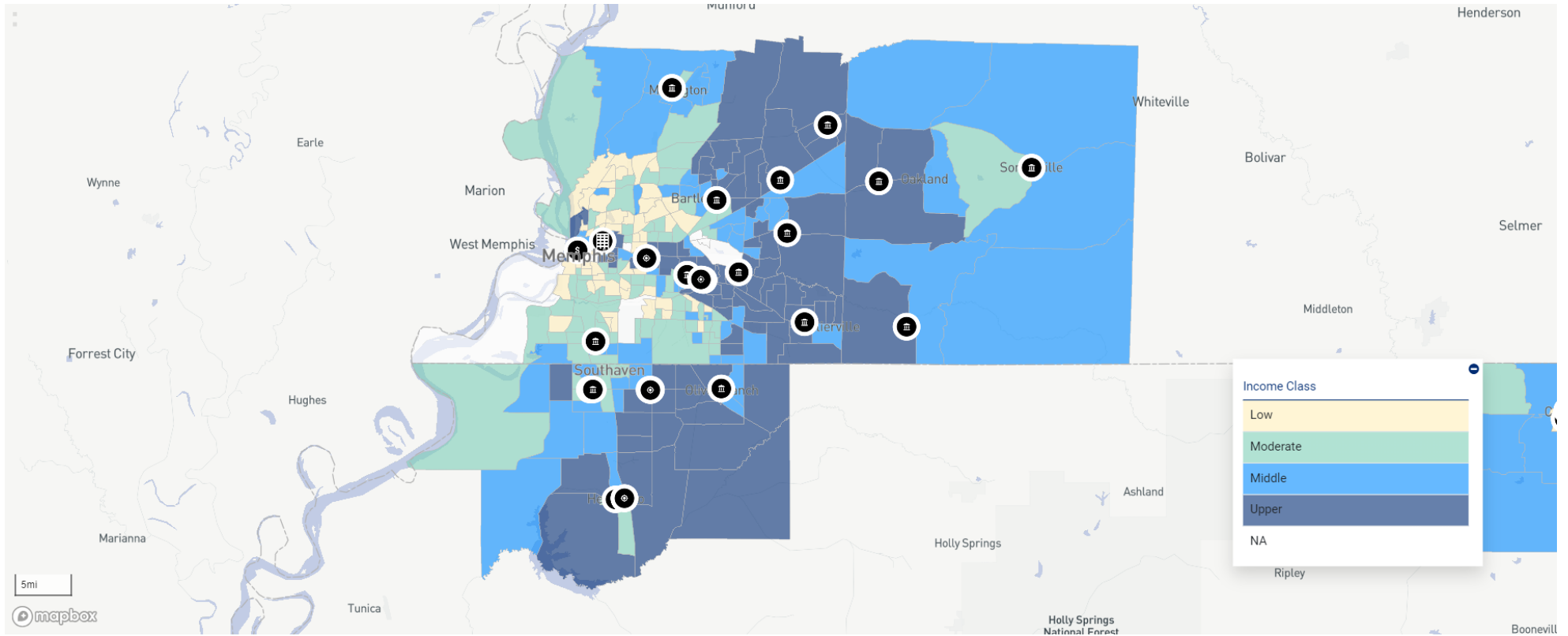
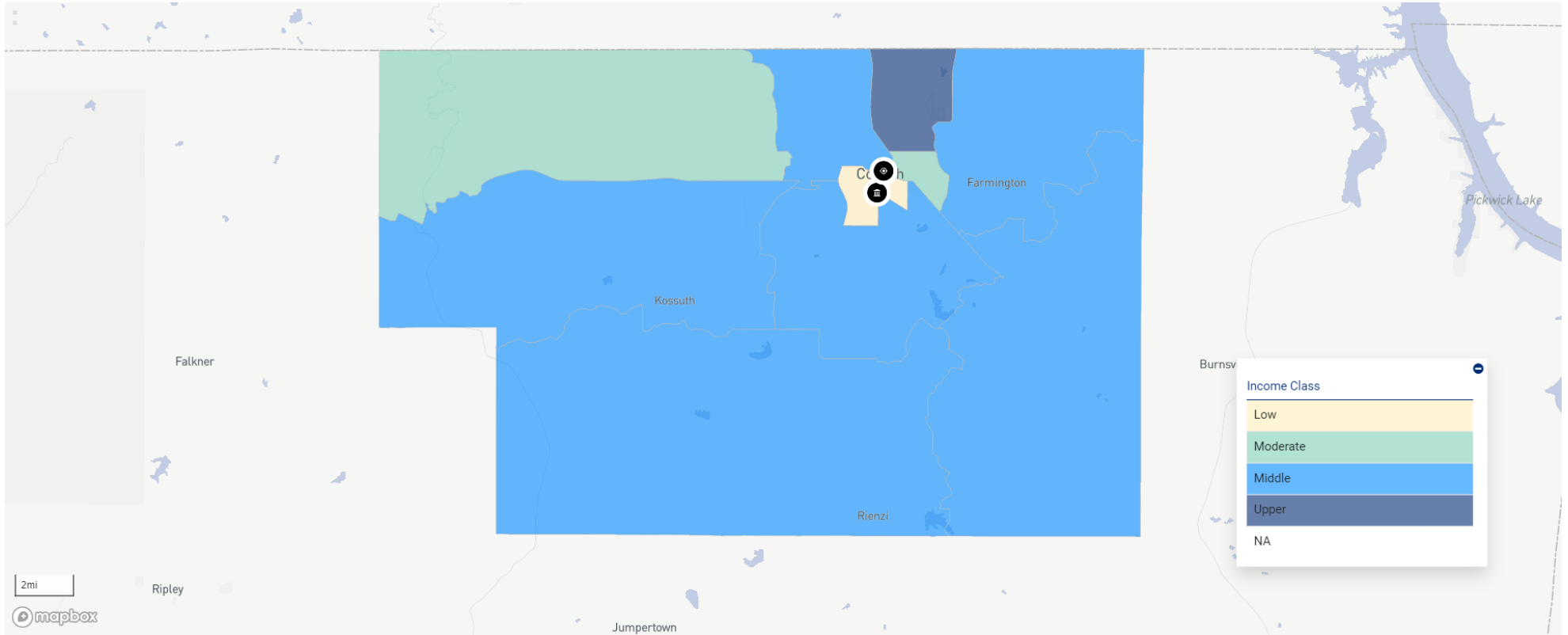


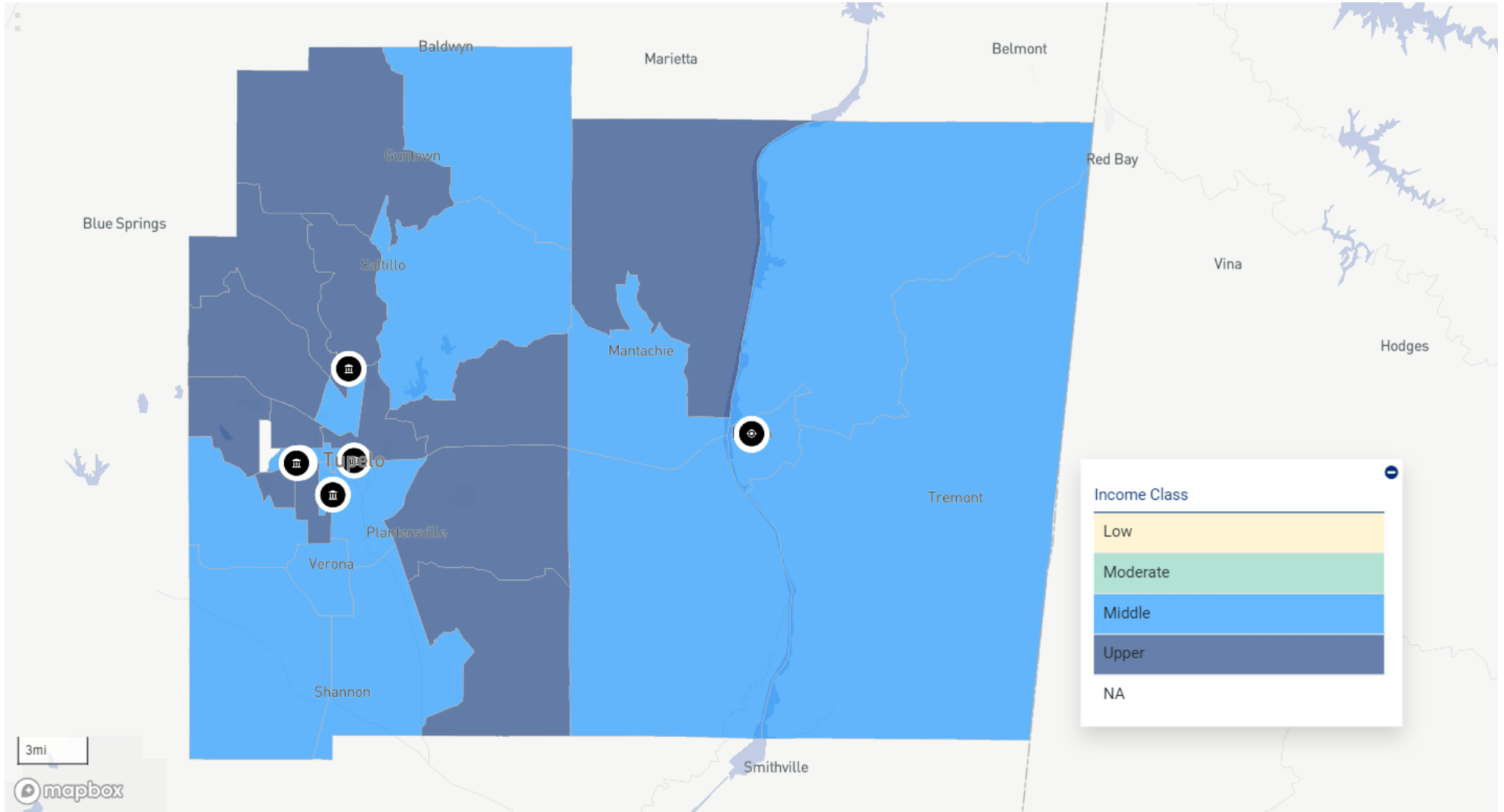
Assessment Set: 2024 ASSESSMENT AREAS
 AA 01 MEMPHIS, TN-MS MSA (Assessment Area)



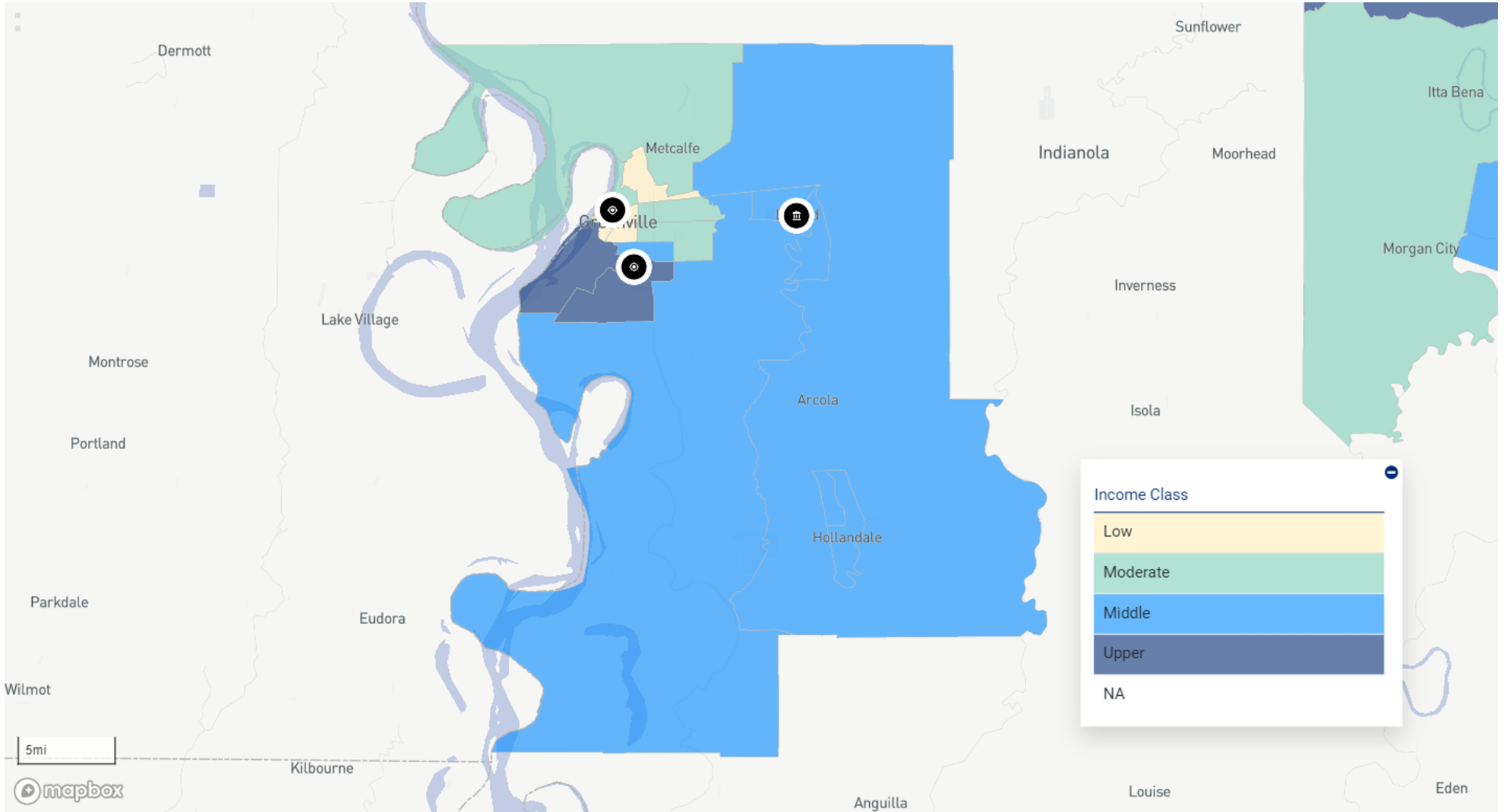
Assessment Set: 2024 ASSESSMENT AREAS
AA 02 ALCORN COUNTY, MS (Assessment Area)



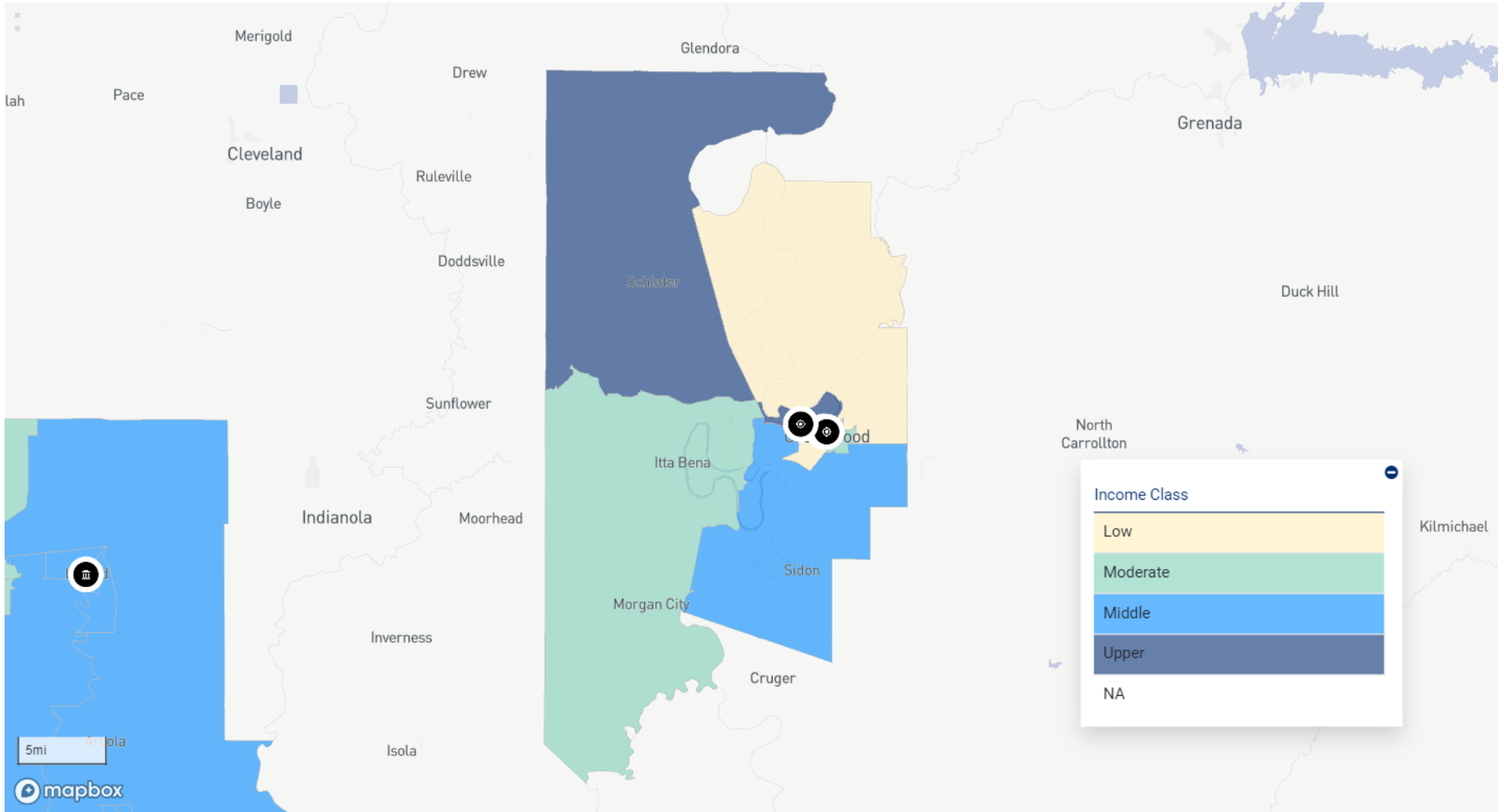
Assessment Set: 2024 ASSESSMENT AREAS
AA 03 ITAWAMBA AND LEE COUNTIES, MS (Assessment Area)



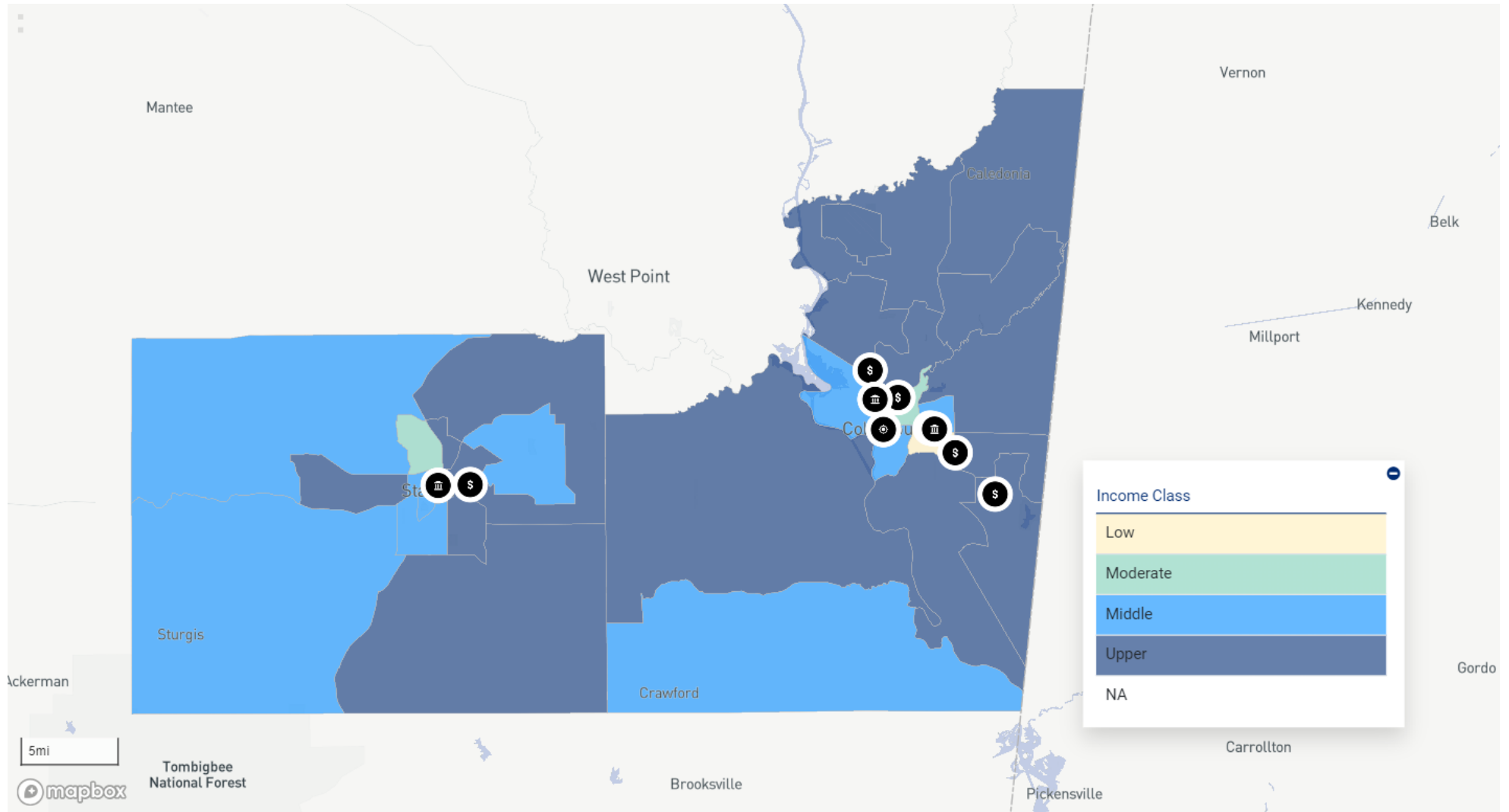
Assessment Set: 2024 ASSESSMENT AREAS
AA 04 WASHINGTON COUNTY, MS (Assessment Area)



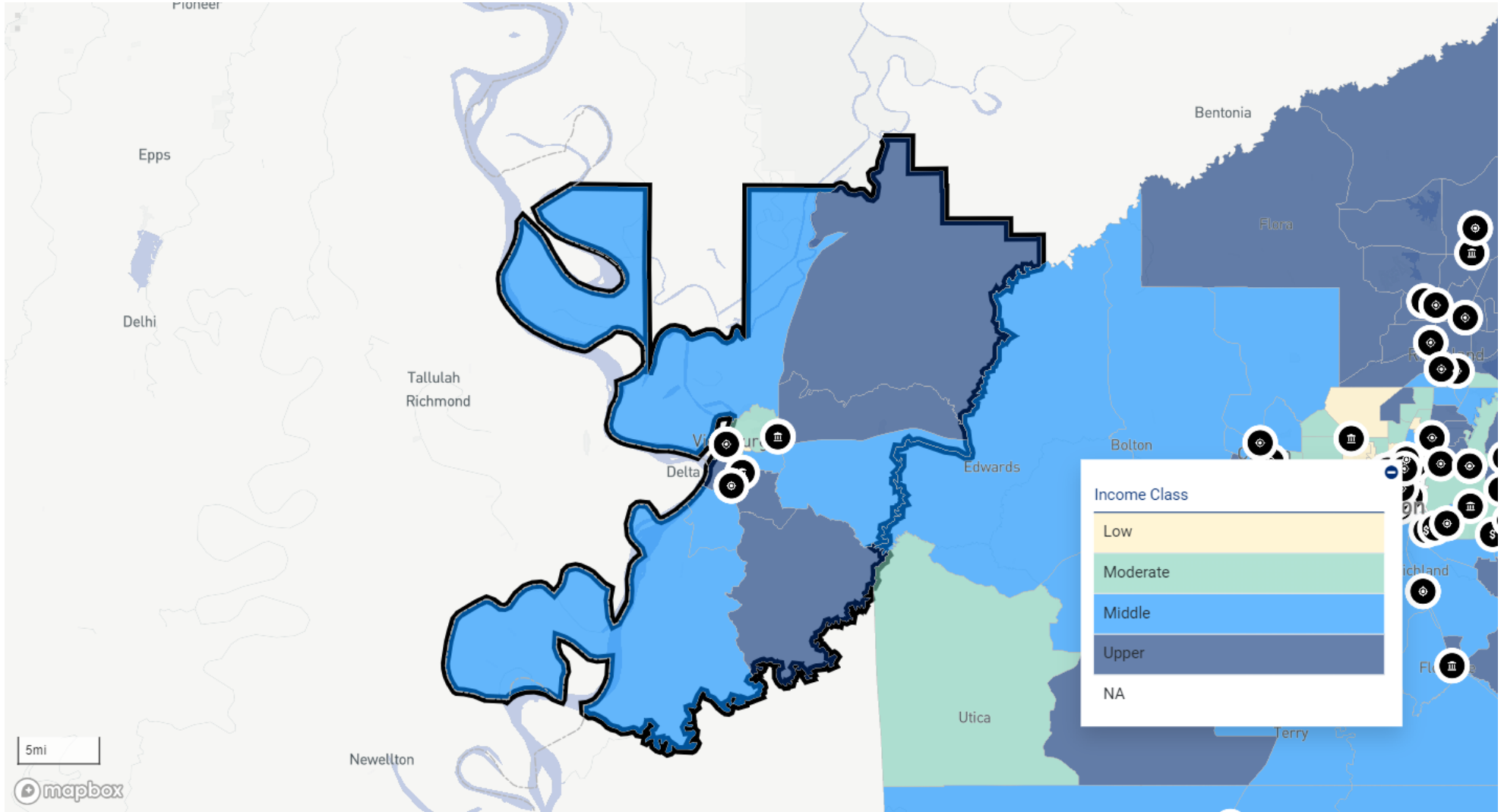
Assessment Set: 2024 ASSESSMENT AREAS
AA 05 LEFLORE COUNTY, MS (Assessment Area)



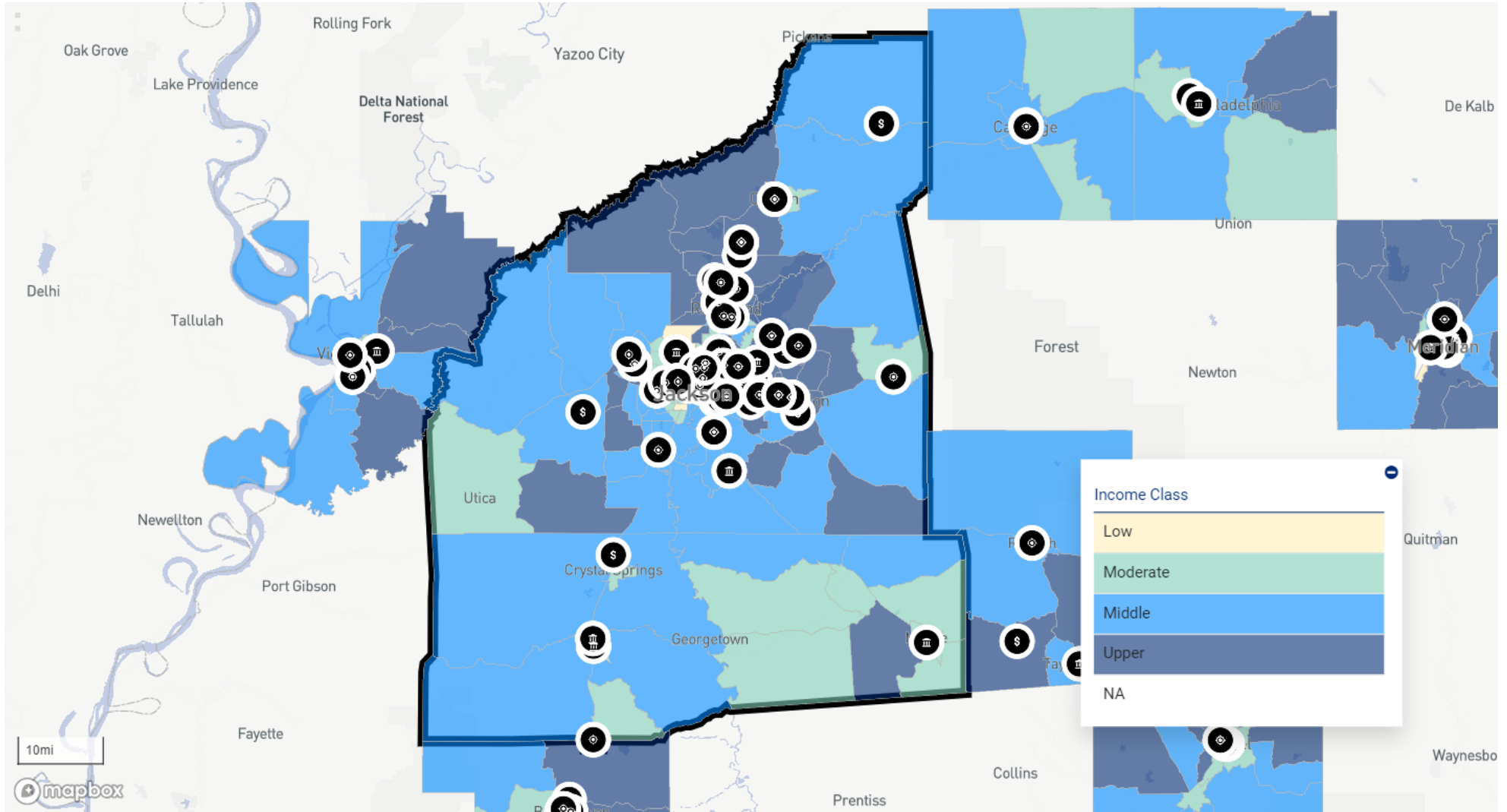
Assessment Set: 2024 ASSESSMENT AREAS
AA 06 LOWNDES AND OKTIBBEHA COUNTIES, MS (Assessment Area)



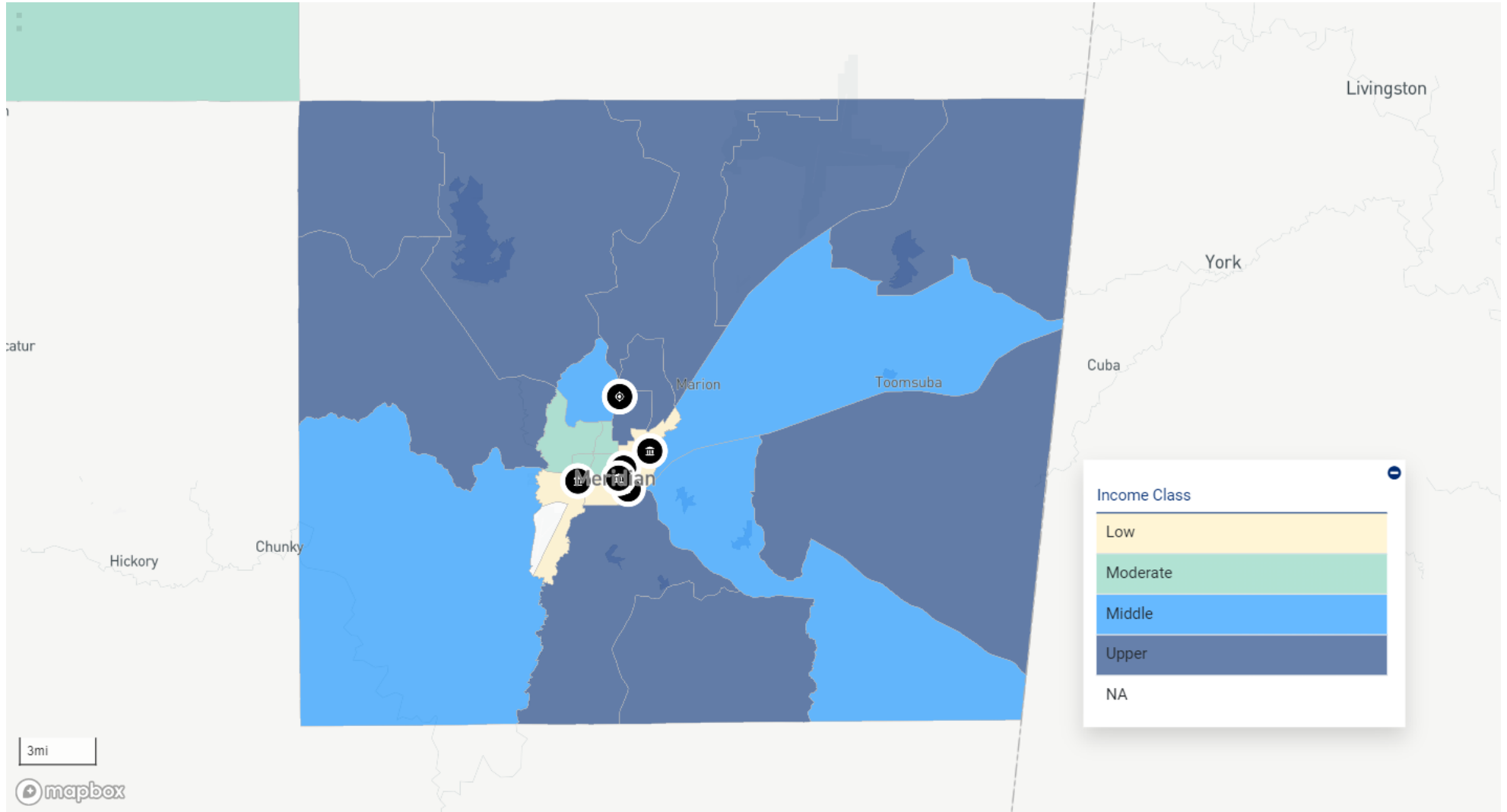
Assessment Set: 2024 ASSESSMENT AREAS
AA 07 WARREN COUNTY, MS (Assessment Area)



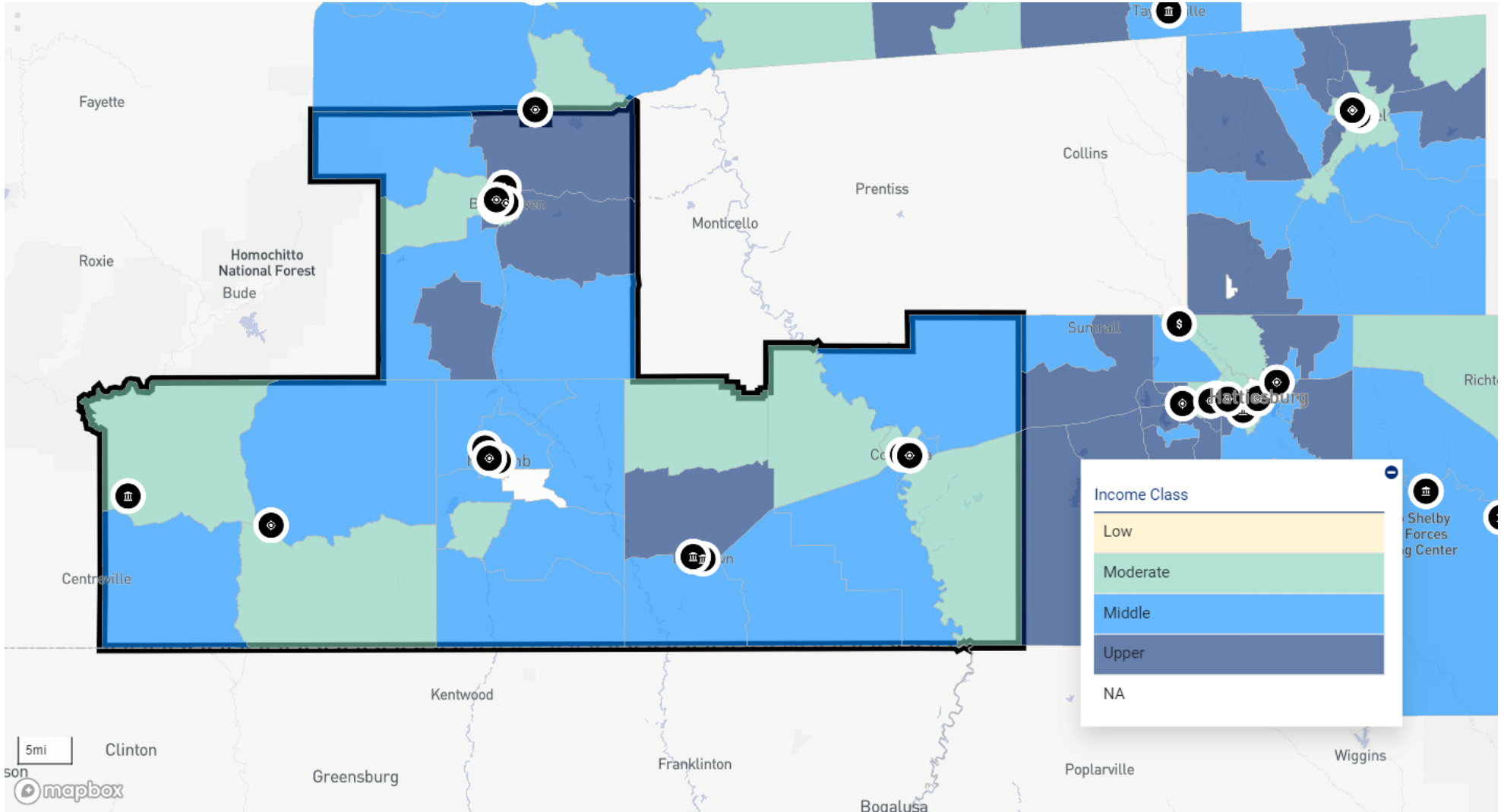
Assessment Set: 2024 ASSESSMENT AREAS
AA 08 JACKSON, MS MSA (Assessment Area)



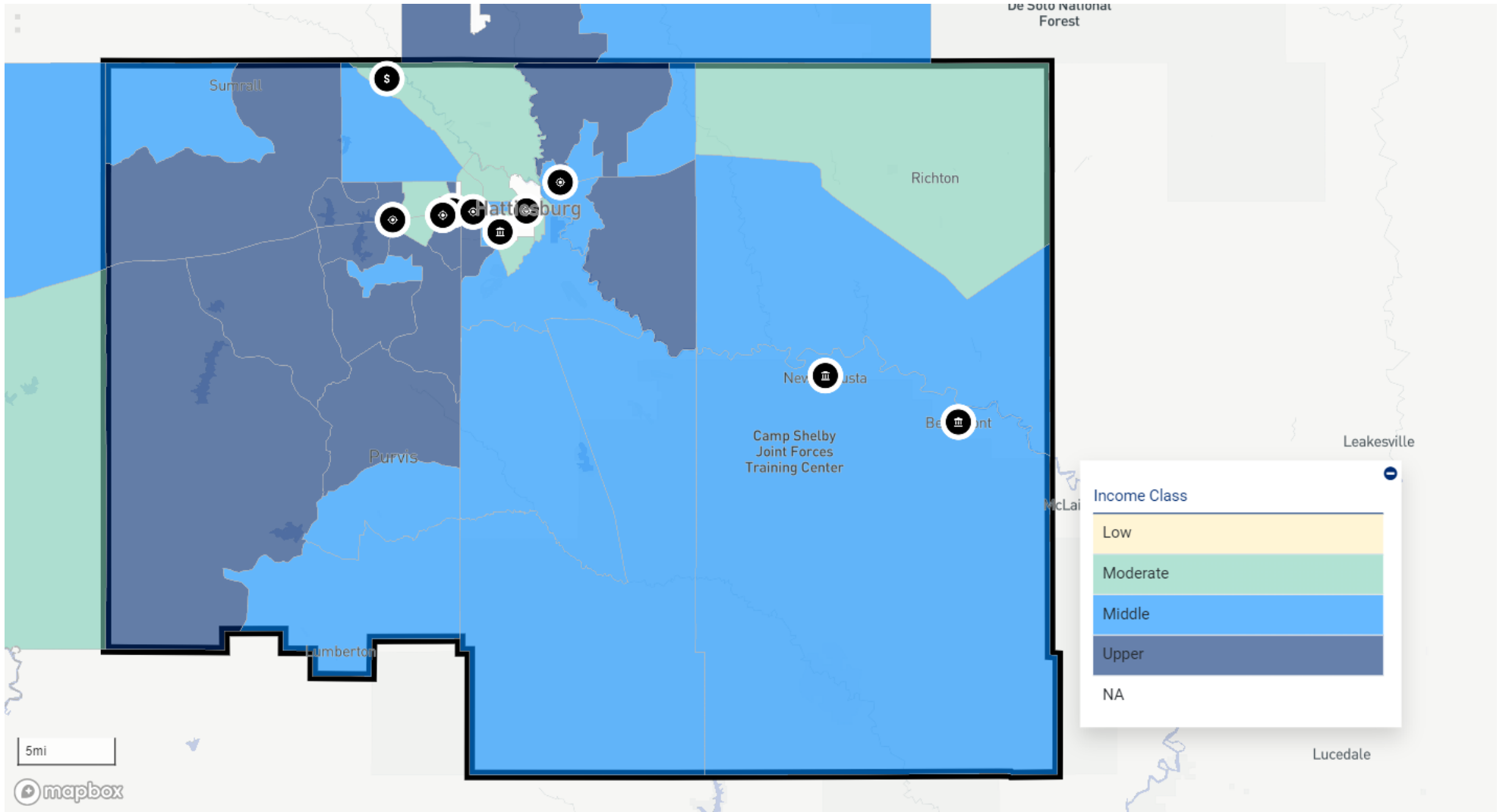
Assessment Set: 2024 ASSESSMENT AREAS
AA 09 LAUDERDALE COUNTY, MS (Assessment Area)



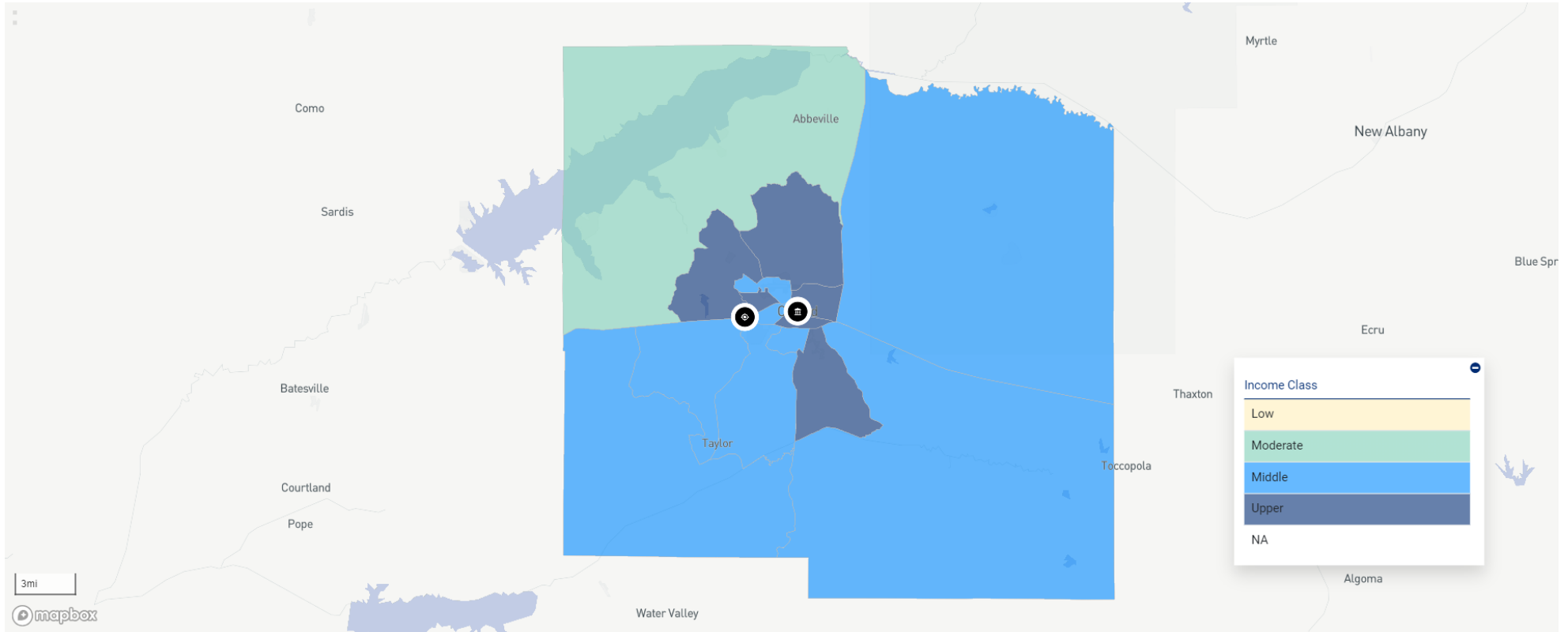
Assessment Set: 2024 ASSESSMENT AREAS
AA 10 SOUTHERN, MS (Assessment Area)



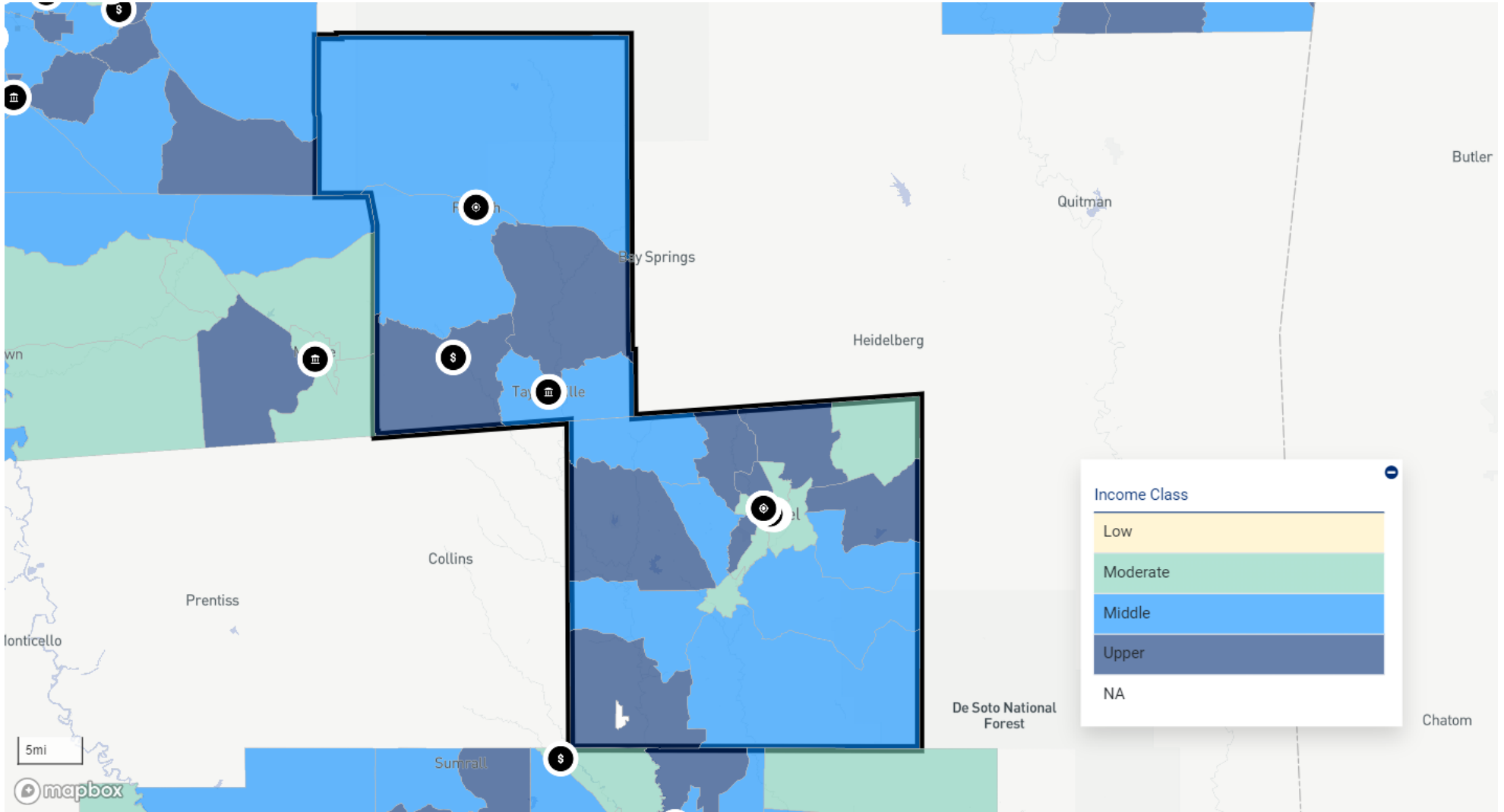
Assessment Set: 2024 ASSESSMENT AREAS
AA 11 HATTIESBURG, MS MSA (Assessment Area)



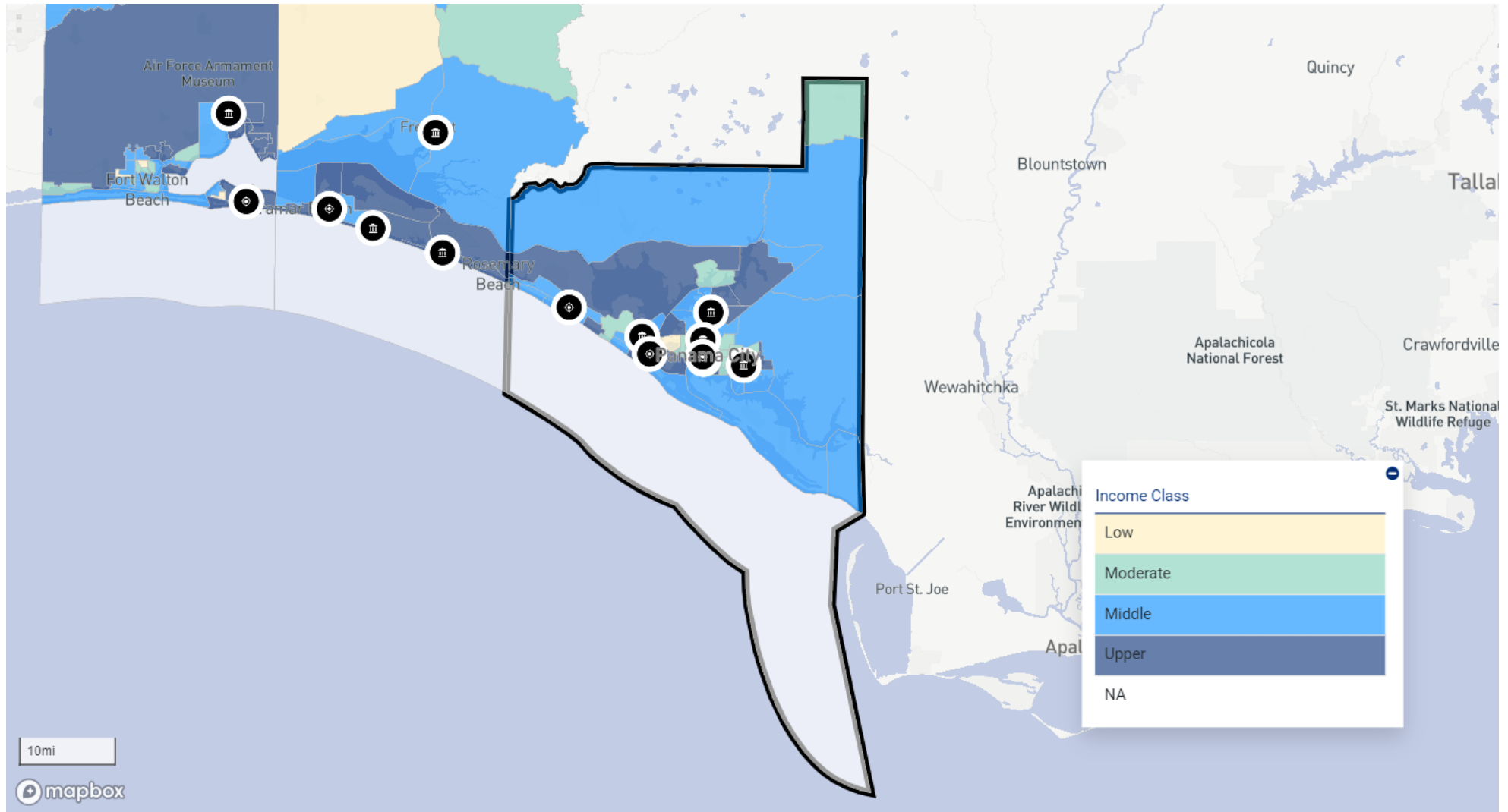
Assessment Set: 2024 ASSESSMENT AREAS
AA 13 LAFAYETTE COUNTY, MS (Assessment Area)



Assessment Set: 2024 ASSESSMENT AREAS
AA 14 SMITH AND JONES COUNTIES, MS (Assessment Area)

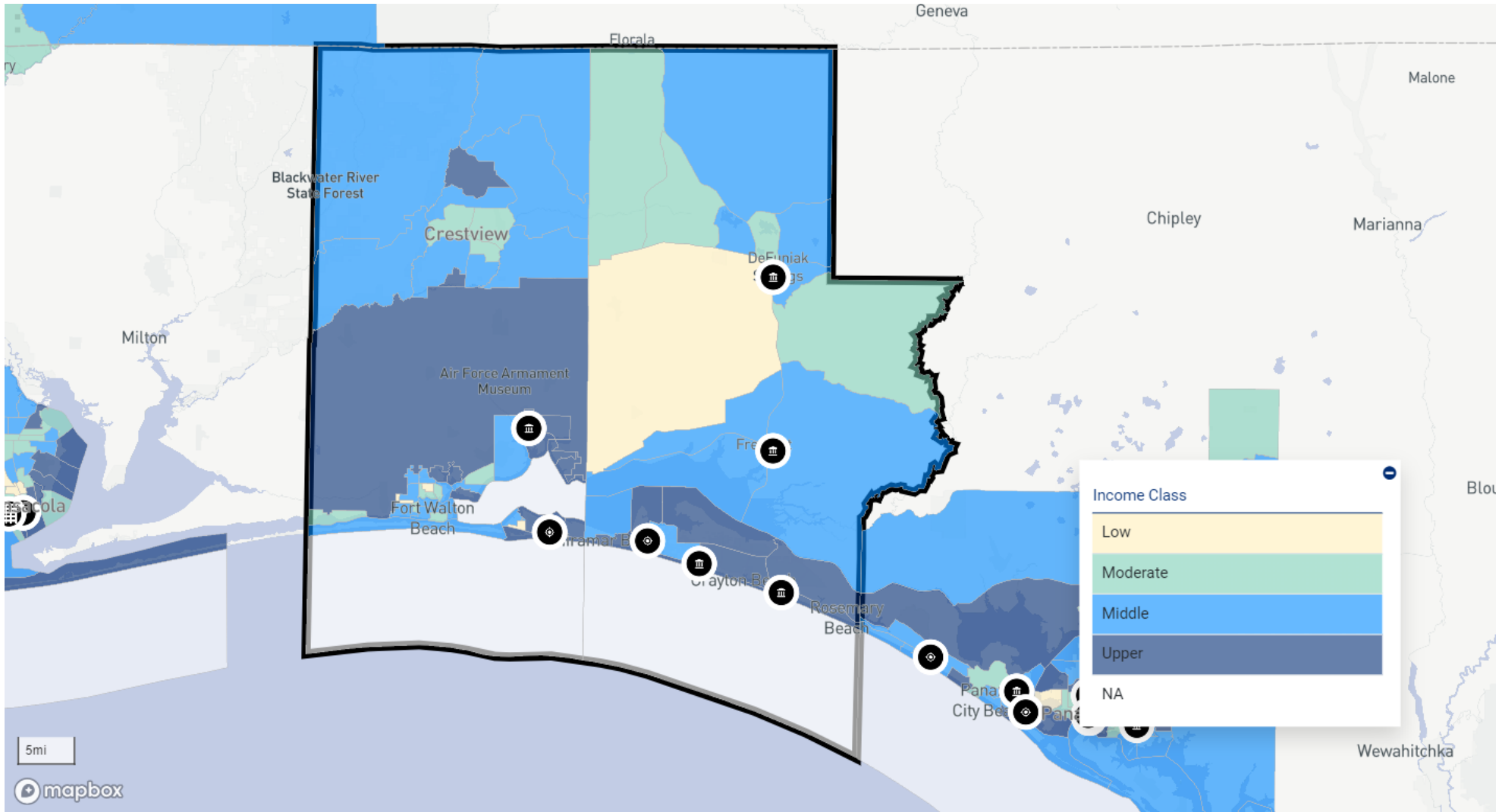


Assessment Set: 2024 ASSESSMENT AREAS
AA 17 PANAMA CITY-BAY COUNTY, FL (Assessment Area)

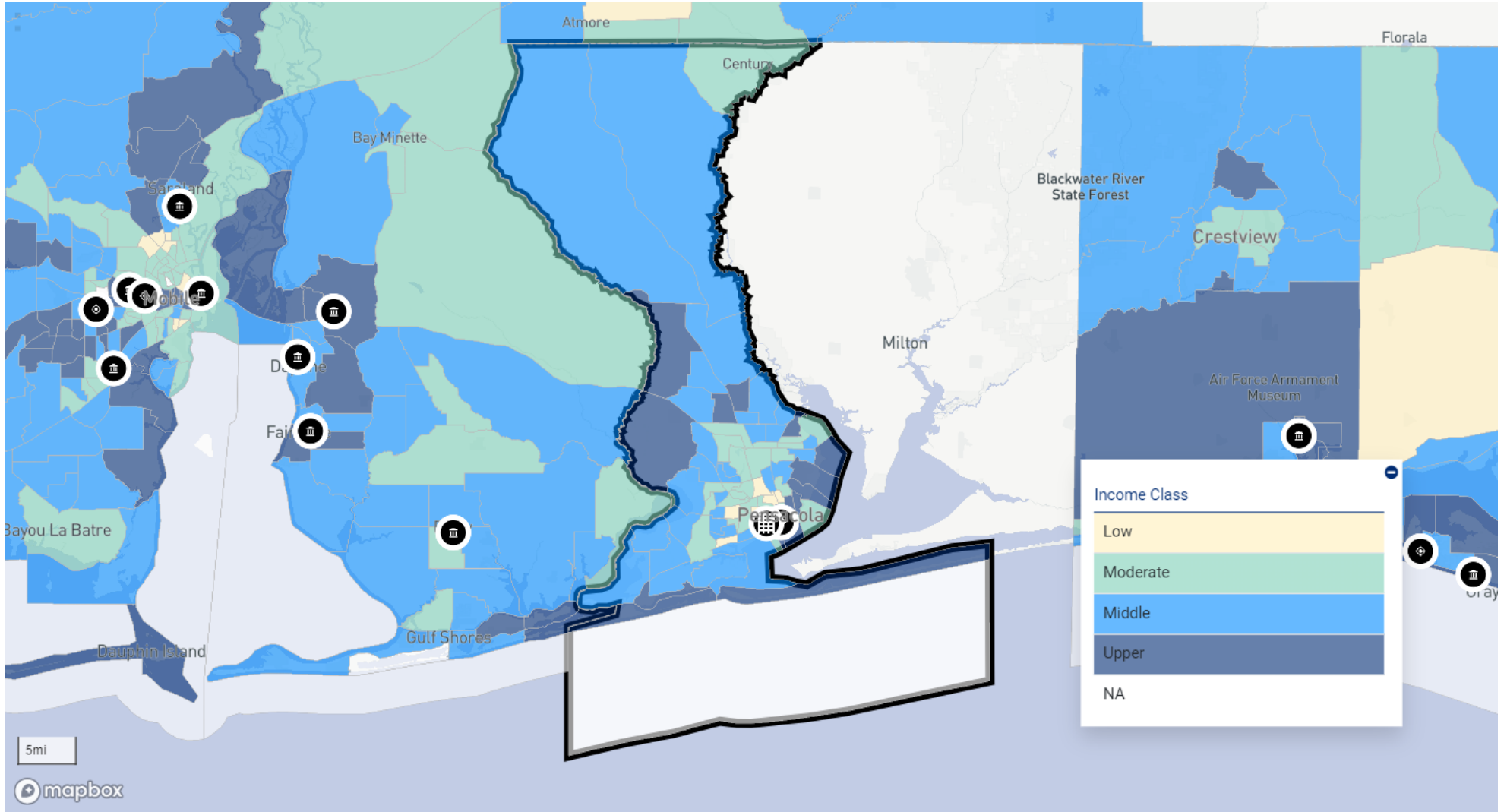


Assessment Set: 2024 ASSESSMENT AREAS

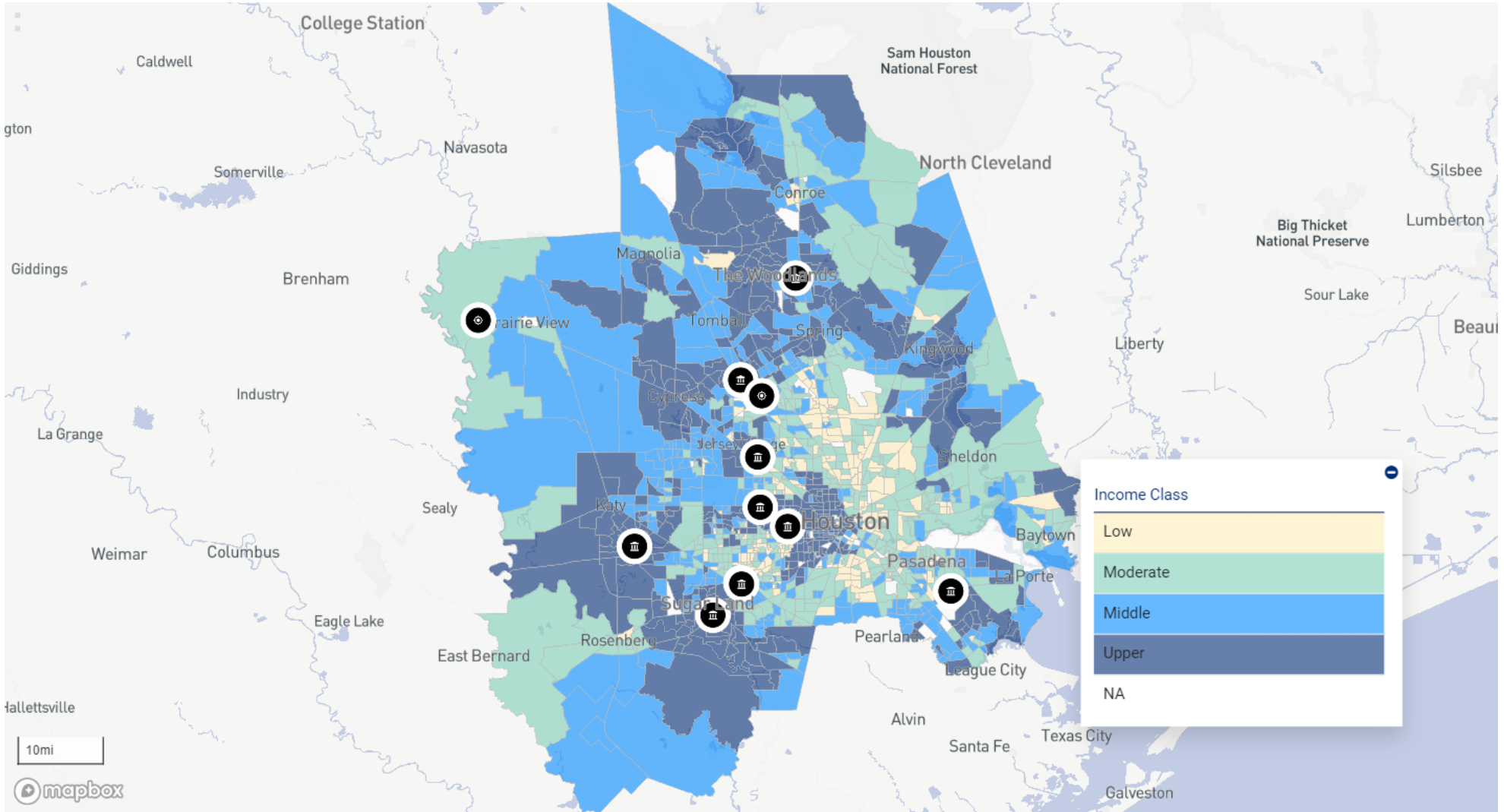
AA 18 CRESTVIEW-FT WALTON-DESTIN, FL MSA (Assessment Area)



Assessment Set: 2024 ASSESSMENT AREAS
AA 19 ESCAMBIA COUNTY, FL (Assessment Area)



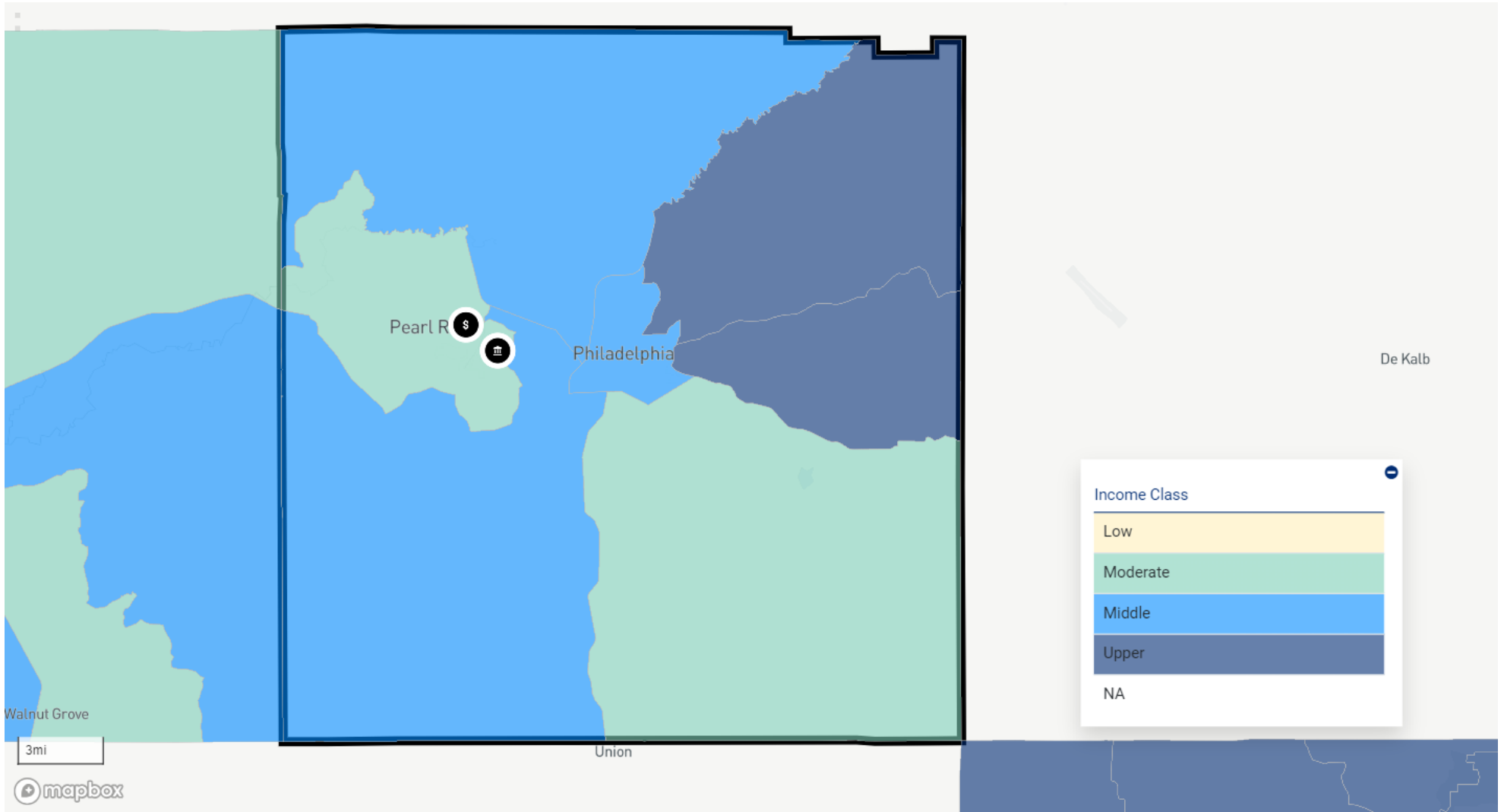
Assessment Set: 2024 ASSESSMENT AREAS
AA 20 HOUSTON, TX MSA (Assessment Area)



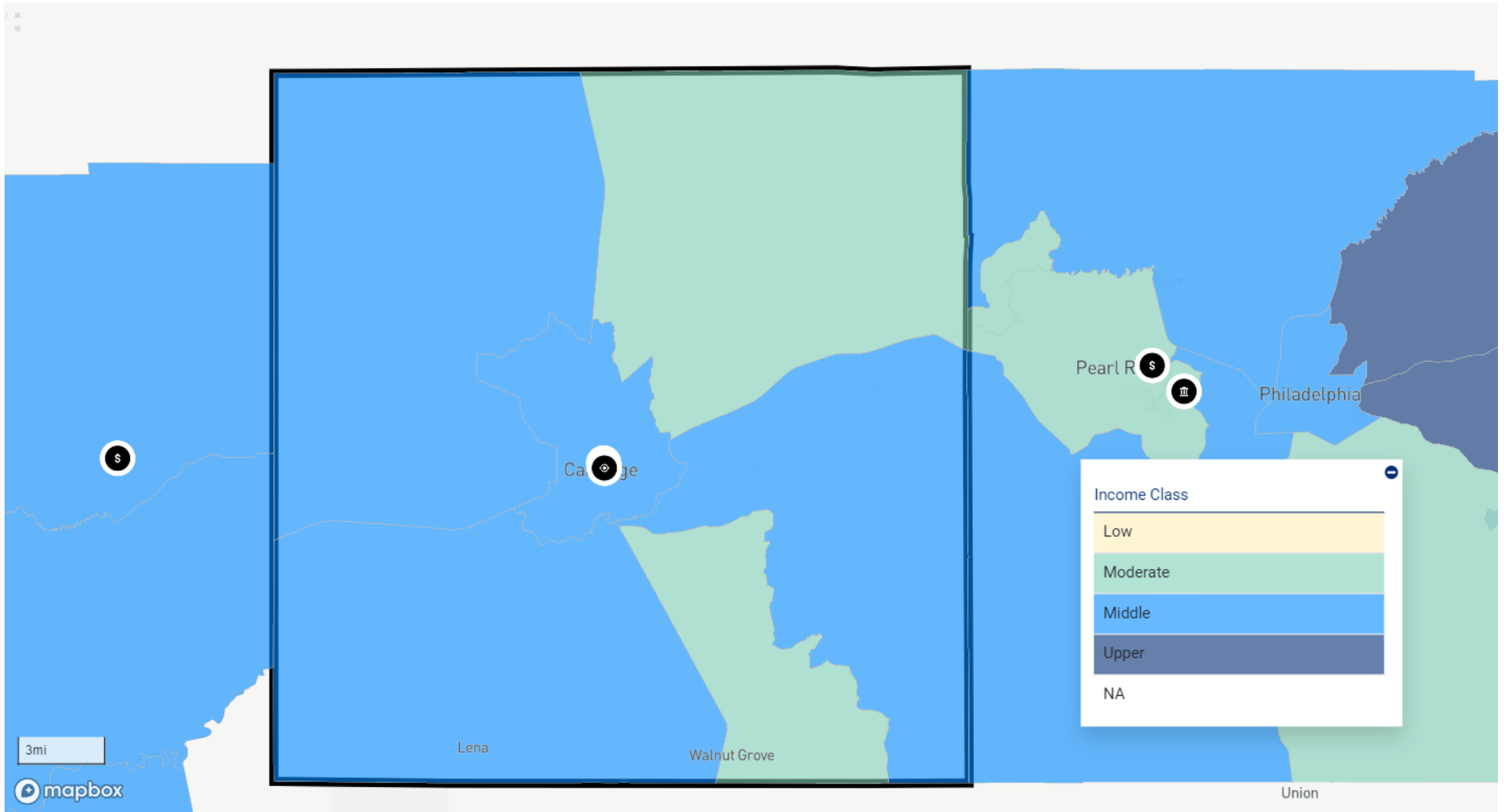
Assessment Set: 2024 ASSESSMENT AREAS
AA 21 HARRISON COUNTY, MS (Assessment Area)



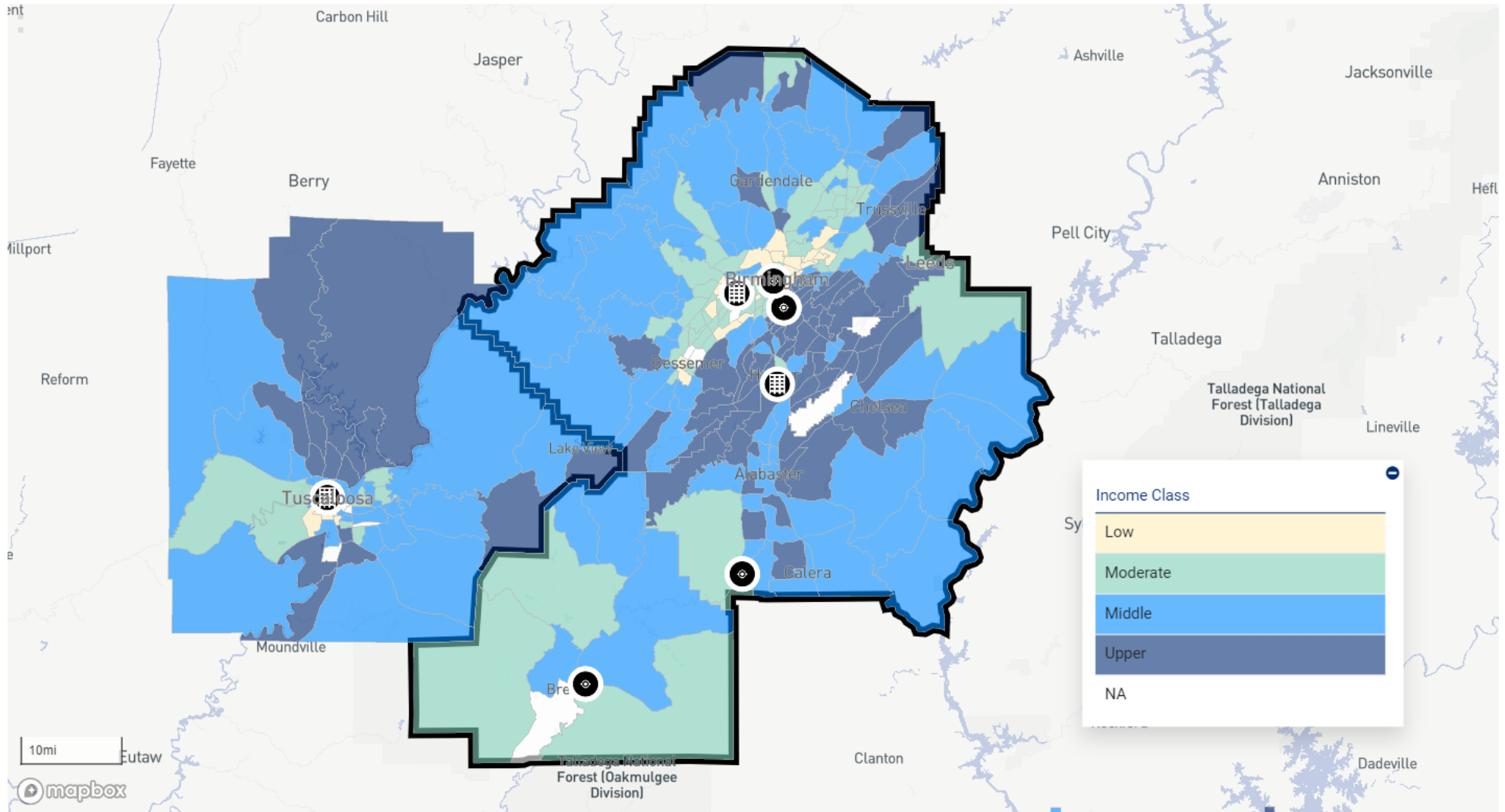
Assessment Set: 2024 ASSESSMENT AREAS
AA 22 NESHOPA COUNTY, MS (Assessment Area)



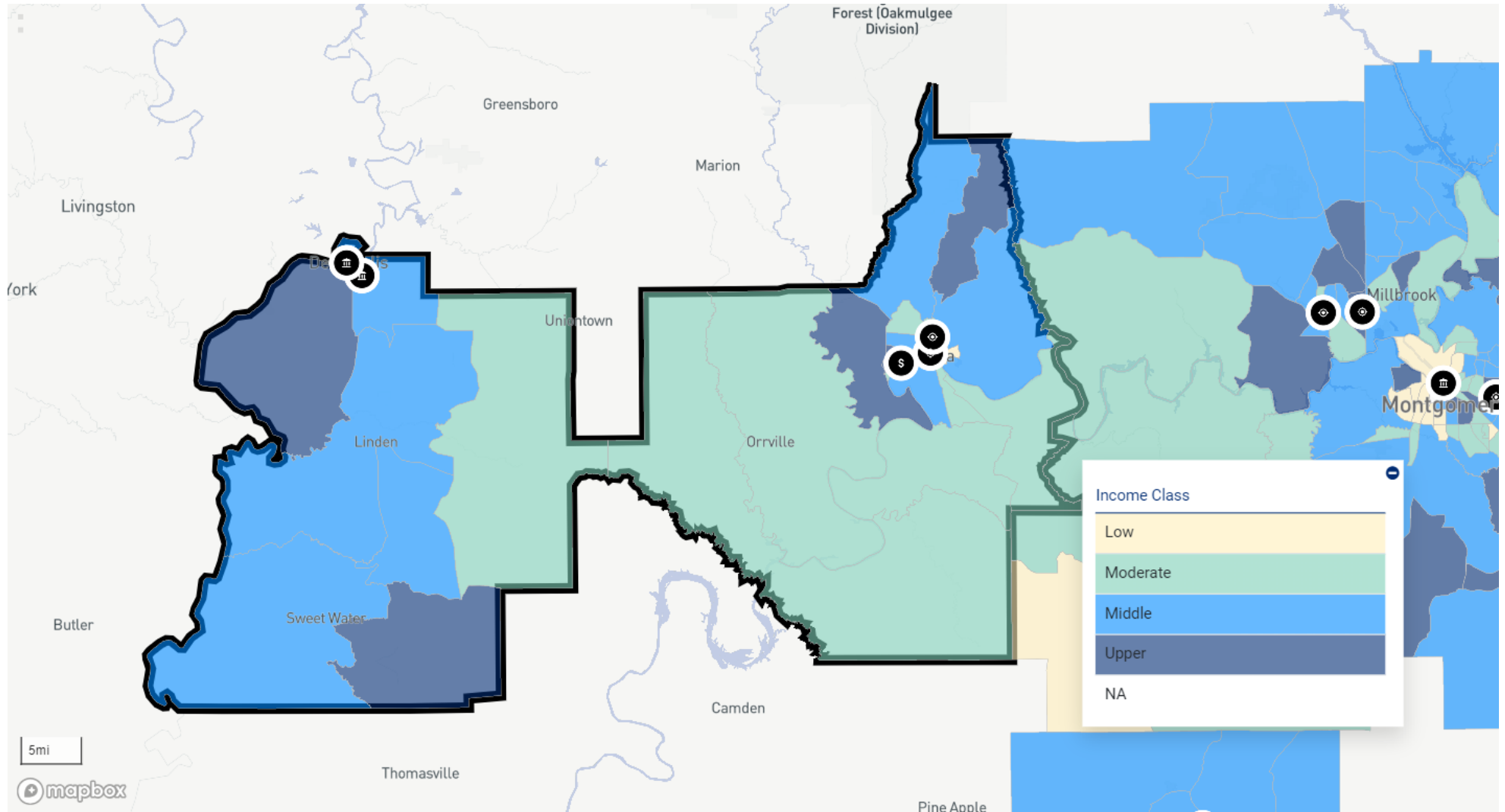
Assessment Set: 2024 ASSESSMENT AREAS
AA 23 LEAKE COUNTY, MS (Assessment Area)



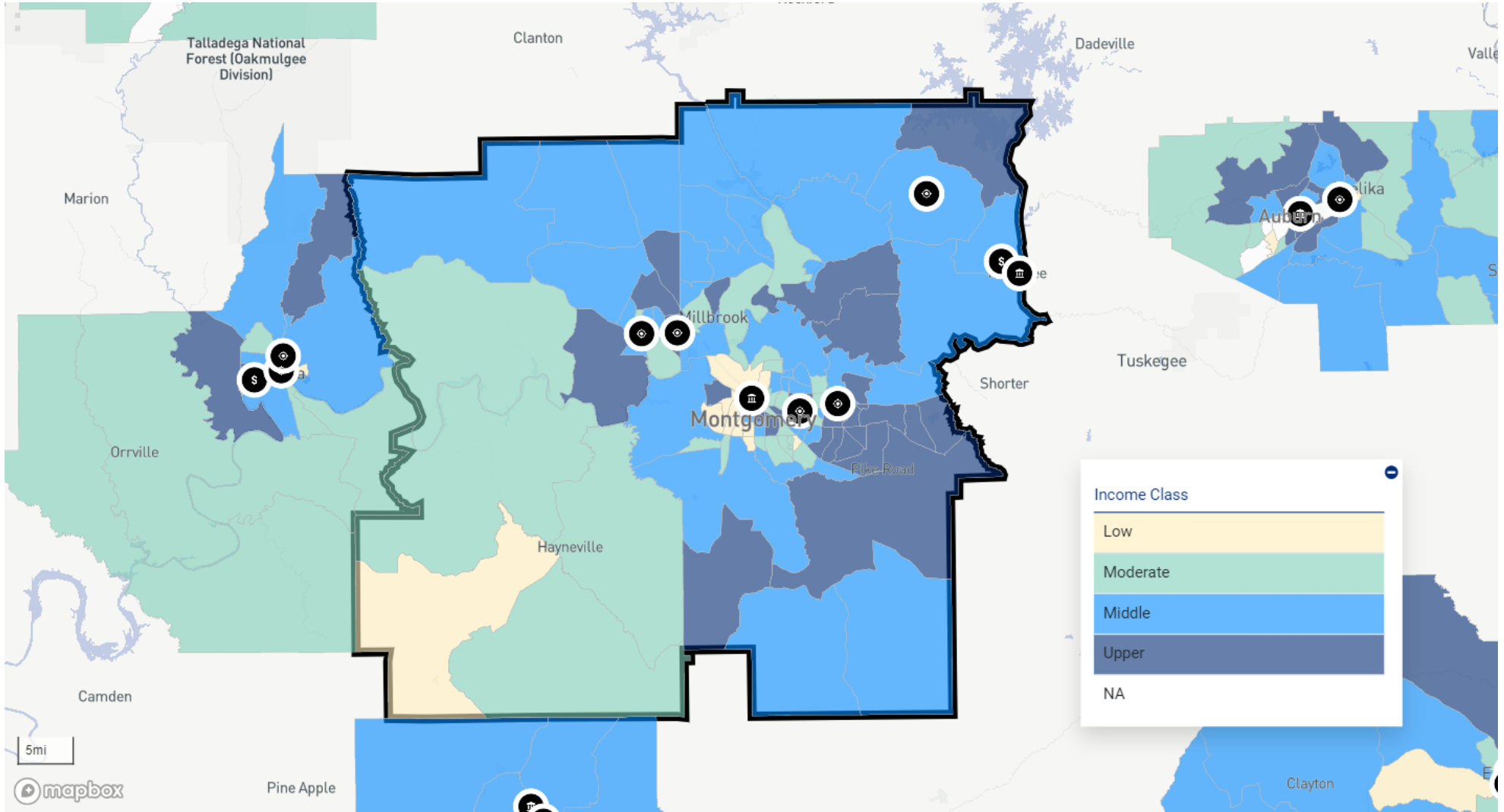
Assessment Set: 2024 ASSESSMENT AREAS
AA 24 BIRMINGHAM, AL MSA (Assessment Area)



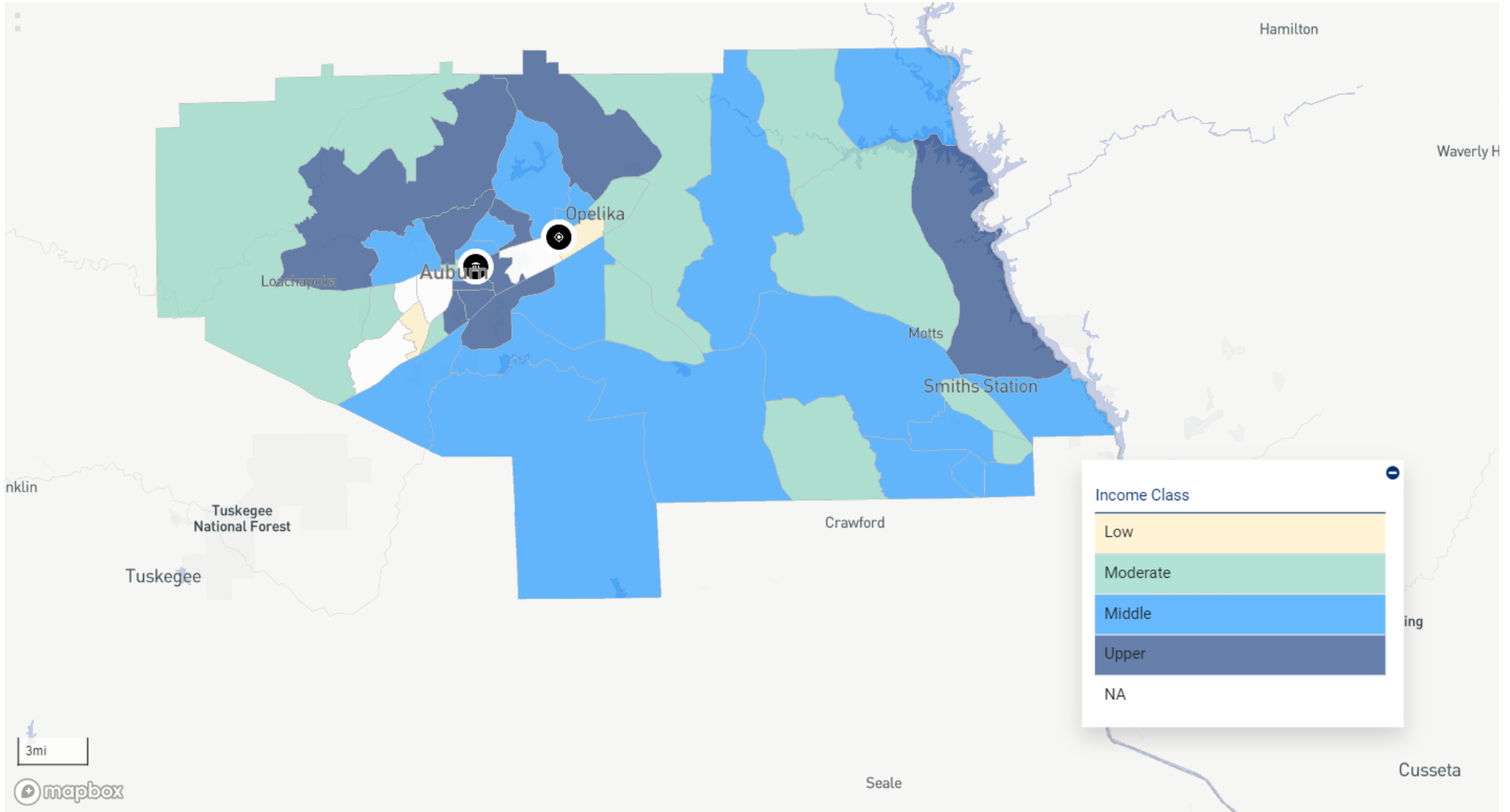
Assessment Set: 2024 ASSESSMENT AREAS
AA 25 MARENGO AND DALLAS COUNTIES, AL (Assessment Area)



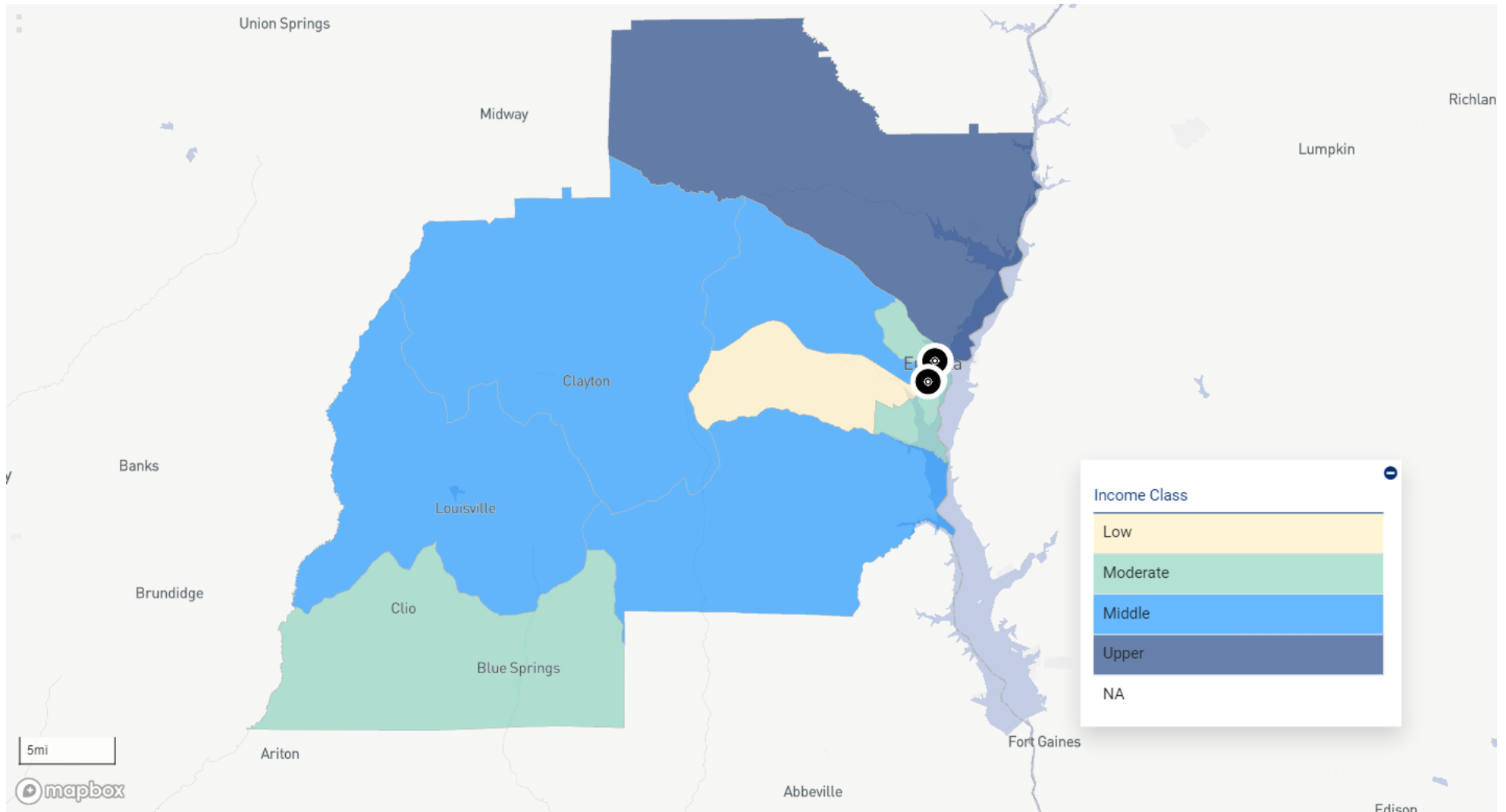
Assessment Set: 2024 ASSESSMENT AREAS
AA 26 MONTGOMERY, AL MSA (Assessment Area)



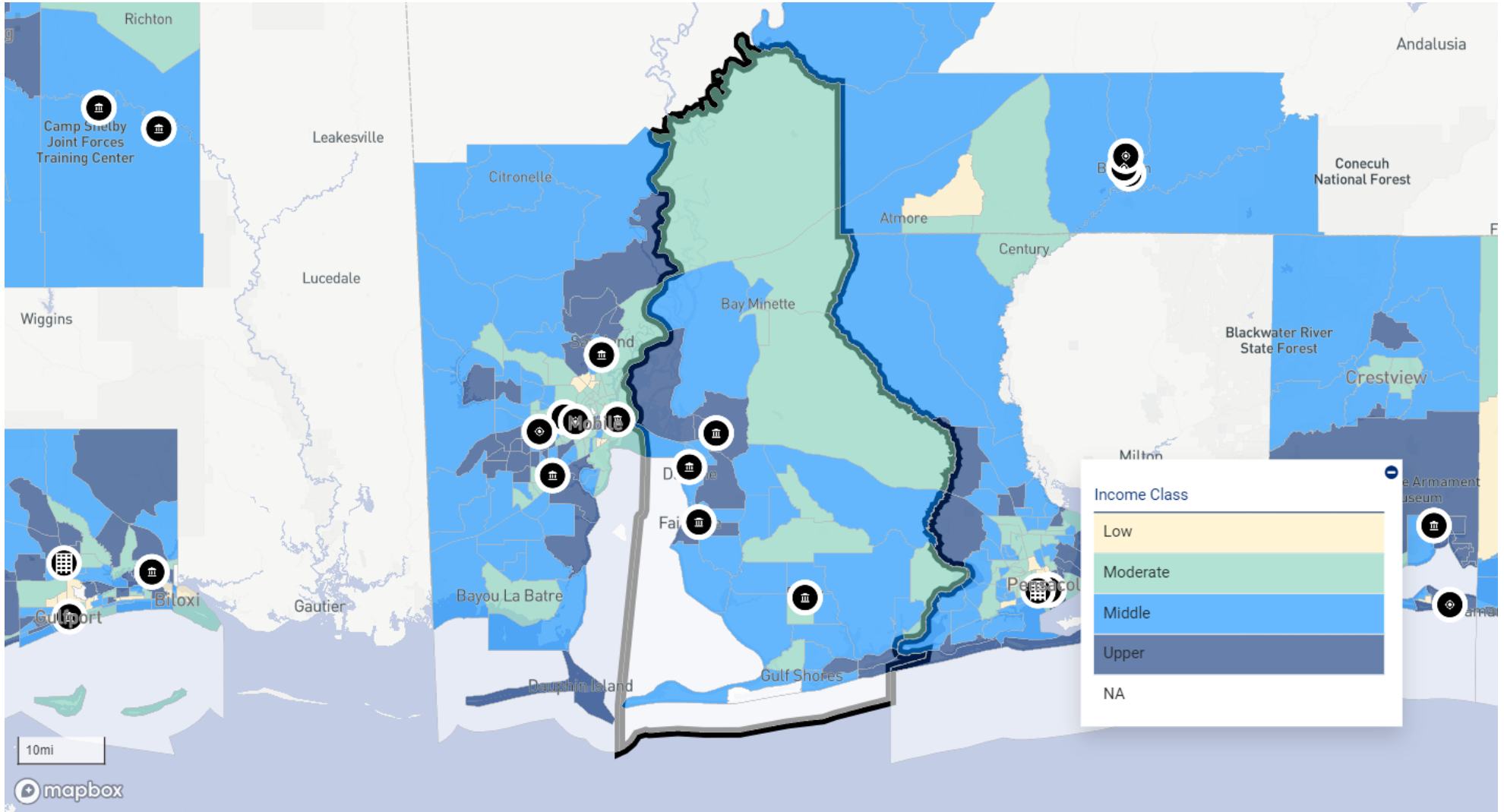
Assessment Set: 2024 ASSESSMENT AREAS
AA 27 AUBURN - OPELIKA, AL MSA (Assessment Area)



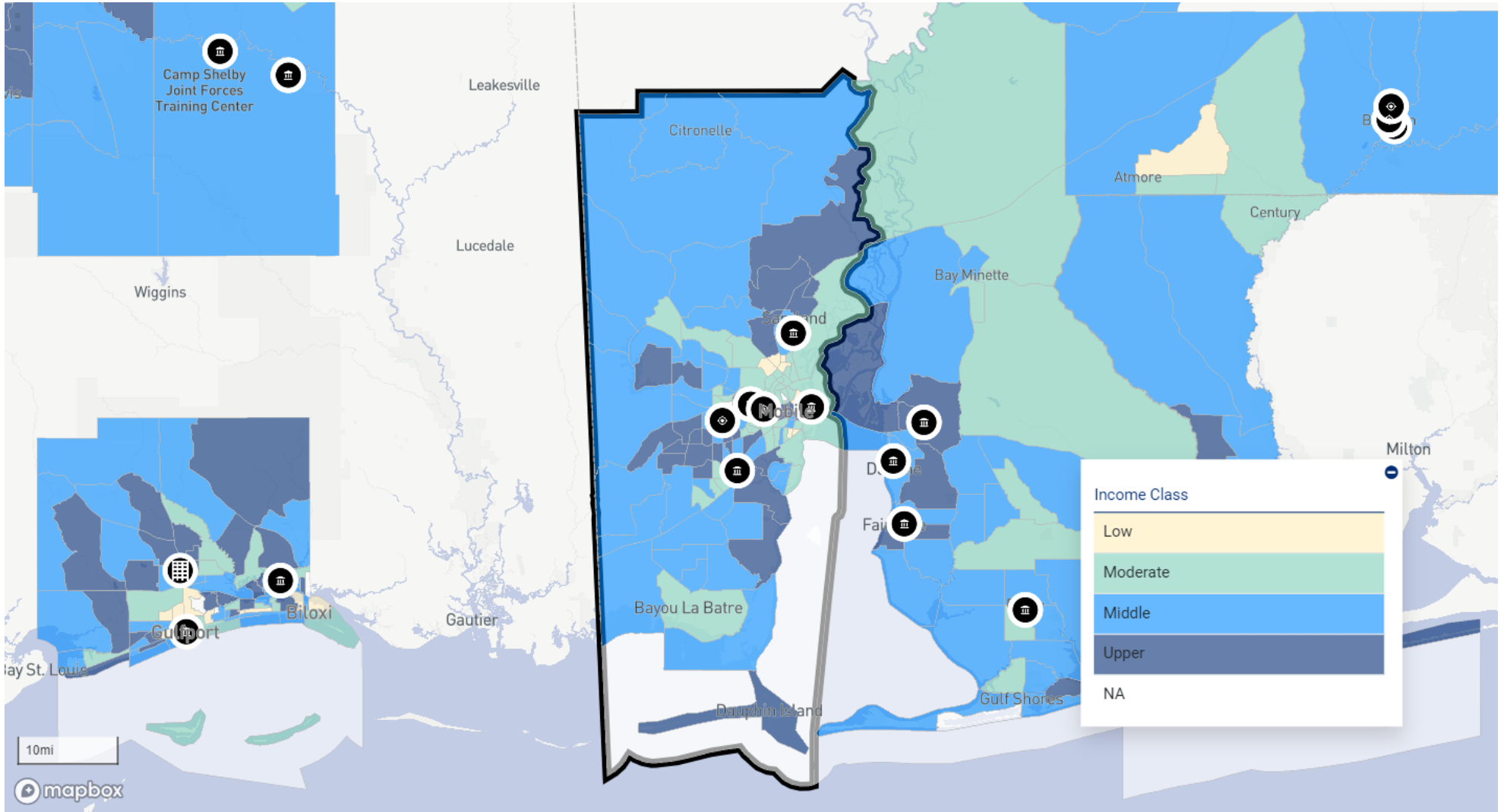
Assessment Set: 2024 ASSESSMENT AREAS
AA 28 BARBOUR COUNTY, AL (Assessment Area)



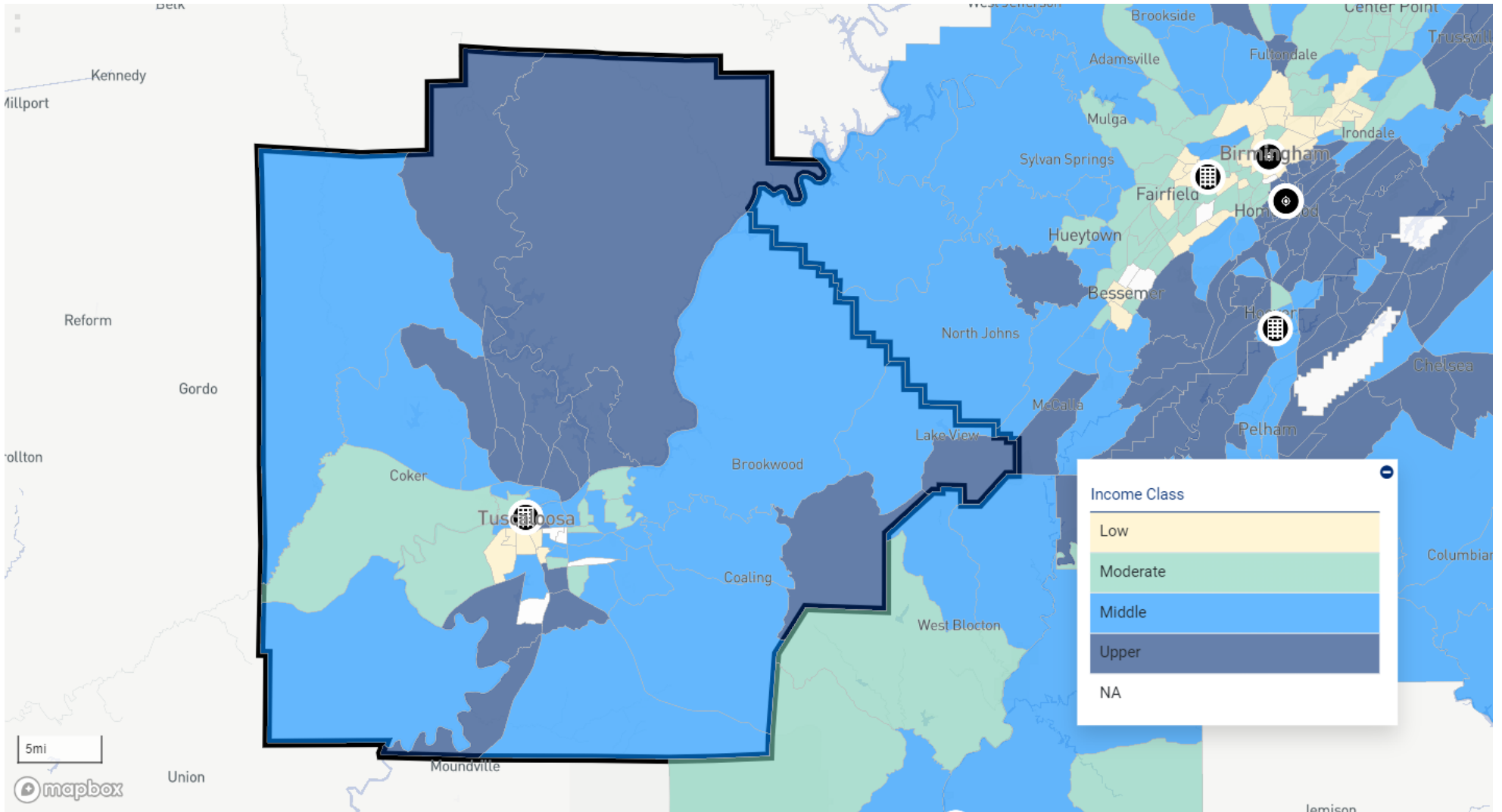
Assessment Set: 2024 ASSESSMENT AREAS
AA 29 BALDWIN COUNTY, AL MSA (Assessment Area)



Assessment Set: 2024 ASSESSMENT AREAS
AA 30 MOBILE, AL MSA (Assessment Area)

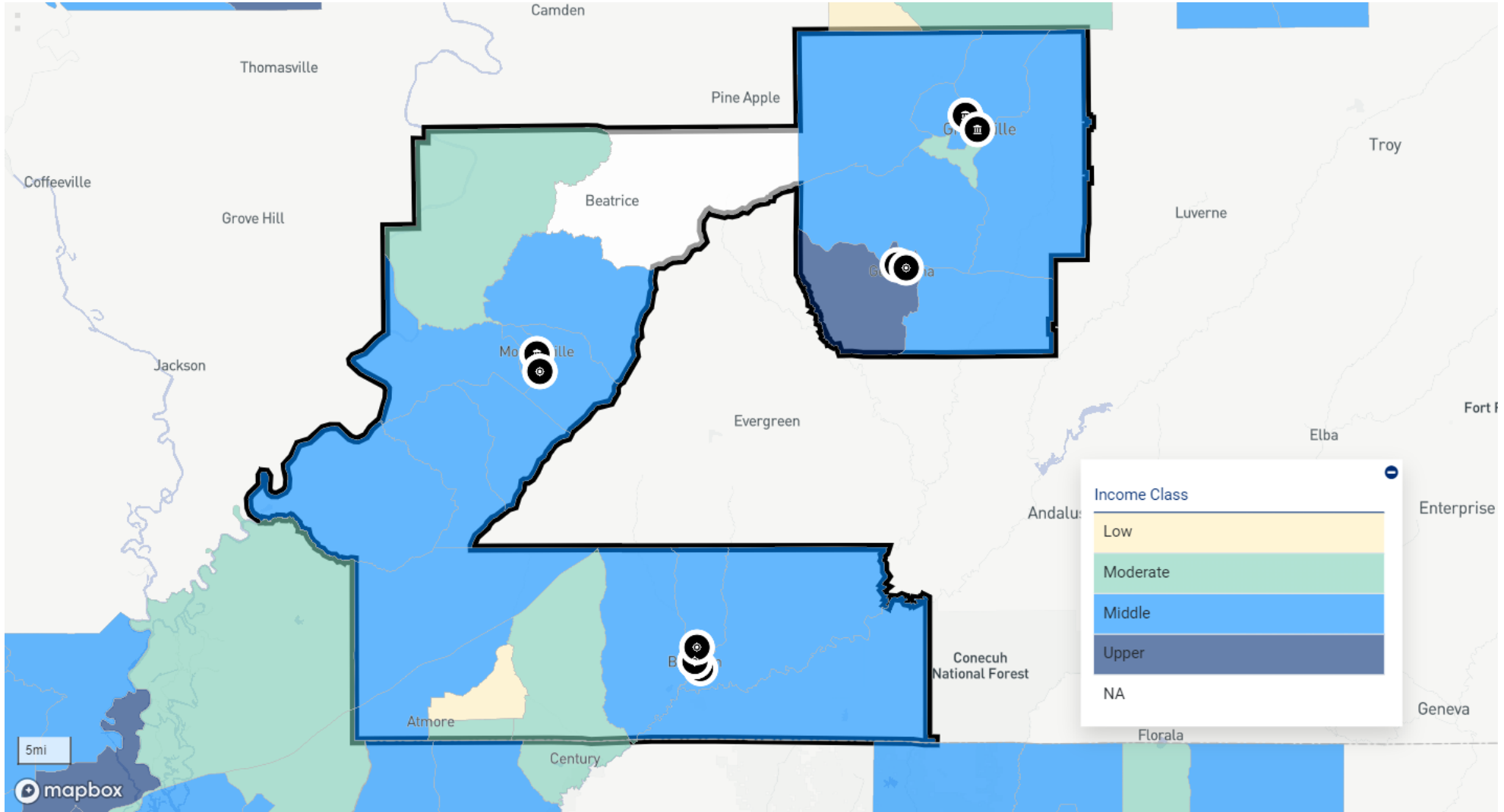


Assessment Set: 2024 ASSESSMENT AREAS
AA 31 TUSCALOOSA, AL (Assessment Area)



Assessment Set: 2024 ASSESSMENT AREAS

AA 32 ESCAMBIA, MONROE AND BUTLER COUNTIES, AL (Assessment Area)



Assessment Set: 2024 ASSESSMENT AREAS
AA 33 HUNTSVILLE, AL MSA (Assessment Area)

